

2007 ANNUAL REPORT

Youth **Youth Update**



Believing in the power of potential...™

Letter from the Board Chair

Dear Friends of Youth In Need:

It is with great pride that I write my final letter to you as Youth In Need's Board Chairman. In the pages of this Annual Report, you will see that 2007 was a year of significant accomplishments. None of these would have been possible without the dedication of staff, Board members, donors and supporters. To you, I extend my heartfelt thanks and sincere congratulations for an excellent year.



Jerry Daniels
2007 Board Chair

First, I would like to thank Youth In Need's outstanding Board of Directors. Their insightful planning, dedication to Youth In Need's mission, and their passion for the agency's children, teens and families has provided a strong foundation—one on which Youth In Need will continue to build. This group's commitment and generosity is matched only by the wonderful staff that serves our community so well. I'm thankful for their friendship and for making my term as Board Chair a most enjoyable one. Carolyn Koenig will lead the board for the next two years. We will all benefit greatly from her enthusiasm and her commitment to this agency.

I'm thrilled to report that 2007 was a record-breaking year, both in the number of individuals we served and in the community support we received. We assisted more than 10,000 children, teens and family members in six Missouri counties, a 10 percent increase over the previous year. At the same time, we raised more than \$1 million in support of our annual fund. This is the first time we

have achieved that level of financial support. And we moved closer to our \$3.5 million goal for our *So Every Child Has a Future* Capital Campaign, with over \$2.5 million in cash and pledges received by year-end. I cannot thank enough the donors who recognized the impact an organization like Youth In Need has on the community. There are many charitable organizations throughout the metropolitan area that are worthy of support. It is overwhelming to know that so many chose Youth In Need to be the beneficiary of their generosity in 2007.

Most importantly, I remember the 10,000 reasons why I am a Youth In Need Board member. I recognize their strength, perseverance and ability to keep going despite challenge and adversity. It is their success that motivates us to continue down this path of discovery and growth. To those 10,000 children, teens and families, I leave a final and special message as Board Chair: I hope that, in ways large and small, we have helped you to realize your strengths, to reach your goals and to set your sights on a bright future.

Gratefully,

Gerald E. Daniels
2007 Board Chairman

Letter from the President and CEO

Dear Friends of Youth In Need:

2007 was a wonderful year for Youth In Need. A record-high number of children, teens and parents were served and was set in contributions from the community. Further progress was made in the Capital Campaign, with 70 percent of the goal now having been reached.



Jim Braun
President & CEO

We continued to receive high performance ratings from the many government agencies and organizations that fund our programs, from the Federal government to the United Way of Greater St. Louis to local and national foundations. The organizations that regularly monitor non-profit organizations' effectiveness, such as the National Council on Accreditation, the United Way and the Better Business Bureau, all again verified Youth In Need's high level of quality and professionalism.

The most important ratings, however, come from the people who receive our services. Our clients consistently gave us high marks on client satisfaction surveys and experienced positive outcomes. Ultimately, our clients' success provides the most important measure of our success.

So, 2007 was a terrific year. Does that mean we can continue in "cruise control" in 2008? Absolutely not. Far too many children and families have unmet needs. Many threats to the organization exist, such as a slumping economy and a continued declining trend in government grant dollars. Many opportunities also exist, however, and Youth In Need must maintain a sharp focus on the needs of the community and take steps to navigate the threats and take advantage of opportunities.

Among the many significant accomplishments in 2007 was an intensive strategic planning process led by a committee of Board leaders and senior staff. The committee met frequently over a nine month period to develop a detailed analysis of Youth In Need's current strengths and needs, threats and opportunities. A detailed three-year plan came from this analysis, including strategic goals, action steps, timelines and measurable indicators of success. This strategic plan was approved by the Board of Directors at its annual meeting in November and is now in the process of being implemented.

Over the next few years, guided by this outstanding plan, Youth In Need will continue and strengthen the quality of its services, address the community's most pressing needs, measure and report the effectiveness and impact of our services, and further the knowledge of what works best in our field of services.

In short, with the continued support of the community and the efforts of dedicated staff and volunteers, we will build on past accomplishments and continue to be leaders in making a difference in the lives of children and families.

Gratefully,

James A. Braun
President and CEO

Table of Contents

2007: A Year in Review	2-3	Gift with a Brick Program	7	Corporate Partners	9
Financial Report	4	Visionary Leaders Giving Society	8	Volunteers and Product Donations	10
Program Achievements	4	Special Event Sponsors	8		
Annual Roll of Giving	5-6	Memorials and Tributes	9		
Capital Campaign Donors	6	Safe Place	9		

2007: A Year in Review

January

- **St. Cletus Catholic Church provided shelter during a winter storm.** When cold weather hits and the power goes out, many people have friends and family with whom they can stay. But when Youth In Need's residential programs lose power, the story is different. Luckily, during a bad January storm and power outage, St. Cletus Catholic Church became Youth In Need's family. St. Cletus provided warm shelter and meals to the children and teens in Youth In Need's residential homes that lost power.

February

- **Kevin Coleman, Youth In Need's Street Outreach Manager, won two national awards.**

Coleman received the Youth Worker of the Year Award at the National Network for Youth 2007 Symposium in Washington, D.C. The "award recognizes an outstanding youth worker who regularly performs beyond expectations to make significant contributions to his or her agency, community, and the youth work profession." Nominees from across the country were considered for the award. Also while in D.C., Coleman attended the 2007 Black Reel Awards, where his film *Snapshot* won the Best Independent Mini Feature award. The Foundation for the Advancement of African-Americans in Film presented the Black Reel Awards, where 50 movie and television critics from across the country voted on the award winners. Other winners included Forrest Whitaker for Best Actor in *The Last King of Scotland*, Jennifer Hudson for Best Supporting Actress in *Dreamgirls* and Spike Lee for Best Director of *Inside Man*.



From left: Pat Holterman-Hommes, Senior Vice President of Youth Programs; Kevin Coleman Street Outreach Manager; and Jim Braun, President and CEO.

March



Youth In Need staff and children presented a special thank-you poster to Starbucks.



Celebration of Youth 2007 honorees Mary and Rick Leach.

- **Starbucks opening in Wentzville benefited Youth In Need.** On March 1, 2007, the Wentzville Starbucks held a friends and family night to preview its new location and to raise money for Youth In Need's Wentzville Head Start and Early Head Start Center. The event raised \$450 for Youth In Need.
- **Youth In Need broke another record at its 20th annual Celebration of Youth.** The 20th annual Celebration of Youth was held on March 24, 2007, in the Grand Ballroom of the Saint Charles Convention Center. The event honored Rick and Mary Leach, two long-time Youth In Need supporters. Nearly 600 guests filled the Convention Center to honor the Leaches, enjoy dinner and entertainment and bid on a wonderful selection of auction items. Celebration of Youth raised a record-breaking \$288,194 (including NAP and YOP tax credits). The total was up \$75,000 from the 2006 event.
- **Youth In Need celebrated National Safe Place Week.** Youth In Need celebrated National Safe Place Week March 11-17, 2007. National Safe Place Week recognizes all of the people who make Safe Place the successful program it is. Safe Place is a national initiative that educates young people about the dangers of running away. Youth In Need is the regional provider of Safe Place services in the area. During 2007, Youth In Need enrolled 82 new businesses as Safe Place sites. Locally, the program served 18 children and teens through sites and reached more than 7,600 children and 7,800 parents through presentations and community outreach activities.

- **Work began on the Monsanto Fund Science Discovery Garden at Youth In Need.** A \$50,000 grant from the Monsanto Fund, a \$10,000 grant from the Ronald McDonald House Charities of Metro St. Louis, the work of many community vendors and the talent of several Master Gardeners resulted in a plan to transform and beautify a 6,000-square foot outdoor garden and science learning lab at the Scheidegger Family Youth In Need Center in St. Charles. The plans included many trees, shrubs and flowers and a rock garden, gazebo, teepee, vegetable garden, pond, fort and bird bath. The area is available for field trips and learning for all of the children and teens enrolled in Youth In Need's programs. The team broke ground on March 14, 2007, by digging the hole for the pond. (See page 7 for a photo timeline.)

- **Shelter Therapist Katie Goetz made a strong impact on a client family.** A family who received services at Youth In Need's Emergency Shelter sent a note to Youth In Need along with a donation to the agency. Here's what the family said about Shelter Therapist Katie Goetz: "Thank you so very much for the excellent counsel on March 28. Katie was so good at her job that we have had an awesome and great day! Enclosed is a small contribution to your very significant organization. We have been to many different therapists, and Katie was the best!"

April

- **Out-of-School Time Programs (OST) participated in the "Inspire Me to Be" program.** St. Louis City Circuit Attorney Jennifer Joyce's Inspire Me to Be...Gun and Gang Free program helps students identify long-term goals and recognize that being gun and gang free will help them achieve those goals.

- **The first-ever St. Charles County baby shower raised \$21,000.** When teens experience a pregnancy, there are many stressors that can lead to child abuse and neglect. One way to lessen that stress is to help teen parents with basic needs of shelter, diapers, formula and clothing. Bruce Sowatsky, Executive Director of the Community and Children's Resource Board of St. Charles County, and his team organized Shower of Love, St. Charles County's first-ever county-wide baby shower,



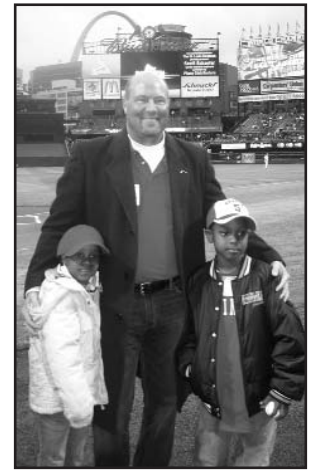
Just some of the donations collected during the Shower of Love.

in response to an increase in child abuse. More than 90 volunteers collected donations from shoppers at area grocery stores on April 12, 2007. Youth In Need and several other area non-profits benefited from the donations. The drive collected \$21,500 in donations, including 13,700 diapers, 33,000 wipes, 1,925 jars of baby food, 1,100 containers of baby powder, 450 boxes of cereal and \$3,000 in cash. The shower was so successful that a second one is planned for 2008.

- **Students in Youth In Need's Out-of-School Time Programs (OST) were on the mound at a St. Louis Cardinals game.** Danajah Muhammad and Jahreem Dennis, two students in Youth In Need's OST Programs, threw out the first pitch at the April 14, 2007, St. Louis Cardinals game against the Milwaukee Brewers. Danajah was chosen for her increased efforts to improve academically, while Jahreem was chosen for consistently being on the honor roll at school.

- **Youth In Need's Trivia Night sold out.** The fourth annual Battle of the Brains Trivia Night was held on April 21, 2007, at St. Robert Bellarmine Catholic Church in St. Charles. Thirty-one tables of guests were challenged in 10 rounds of play. Prizes were given to the first place team, scoring 99 points out of a possible 110, the last place team and the team with the best-decorated table. The event raised more than \$6,200 in support of the children, teens and families Youth In Need serves.

- **Youth In Need opened a special donation store for its programs.** Months of preparation and community generosity helped Youth In Need renovate and open its donation store, which is filled with new toiletries, cleaning supplies, clothing, school/office supplies, baby items, toys and home goods. Designated Youth In Need staff "shop" for their programs while saving money for the agency. The store is stocked with donations from donation drives and individual donors.



From left: Danajah Muhammad, Blaine Vaszily, Youth In Need Board Member; and Jahreem Dennis.

May

- **A new brick program offered to honor friends and family.** Youth In Need unveiled its new "Gift with a Brick" program for donors who wanted to give friends and family a permanent and special tribute. Snaking throughout the Monsanto Fund Science Discovery Garden's lower section is a stamped concrete path with three open areas that hold engraved brick pavers. Donors embraced the opportunity to inscribe lasting messages of hope and love.



Beth Heisse, St. Charles County Head Start Director, reads to a child in the center during a luau celebration.

- **Wentzville Head Start children visited the tropics through learning.** The Wentzville Head Start and Early Head Start Center held a weeklong luau celebration with the children in its program. The celebration included stations of different activities, including snow cones, Hawaiian- and tropical-themed books, fruit kabobs, hula dancing and a limbo contest.

- **The Street Outreach program held a barbeque and open house for community teens.** More than 45 teens attended the Street Outreach program's barbecue on May 12, 2007. Teens toured the program's Drop-In Center; played pool, ping pong, volley ball and board games; surfed the Internet; and enjoyed a barbecue lunch. The event introduced teens to the Drop-In Center's services, which include help with homework, computer access, online job searches, resume assistance, one-on-one talks, laundry access and a safe place to hang out. The Center is for teens, ages 13 to 21, and is open on Fridays and Saturdays.



Two girls explore computers at the Street Outreach program's open house.

June

- **The Ladue News named Youth In Need as a Charity of the Year.** The *Ladue News* selected Youth In Need (along with two other non-profits) to receive its prestigious Charity of the Year Award. The *Ladue News* and its award sponsor Neiman Marcus chose the three winners from a pool of nine finalists and nearly 100 submissions. Each award-winning charity received a \$3,000 cash prize. Each year, the *Ladue News* honors local non-profits for their commitment to bettering the community landscape. The *Ladue News* featured all of the finalists in the June 15, 2007, issue of the paper.



From left: Bob Kalinich, Youth In Need Board Member; Pat Holterman-Hommes, Senior Vice President of Youth Program; Teesha Hernandez, Board Member; Linda Armstrong, Vice President of St. Louis City Head Start; Anita Viehmann, Development Manager; Jim Braun, President and CEO; Marissa Pulizzi, Vice President of Development; Patti McKelvey, Board Member; and Daryl Rothman, Vice President of Head Start (West), at the Ladue News reception.

July

- **A Head Start parent returned to praise the program that impacted her children.** A former Head Start parent returned to praise Youth In Need's St. Charles City Home-Based Head Start and Early Head Start program. She said the program positively prepared her children, now ages 10 and 8, for their education. She said Head Start instilled in them the values and educational skills that now have both children in the gifted program at their schools.



Governor Matt Blunt poses with some children who attended the bill signing.

- **Governor Matt Blunt signed a bill, using Youth In Need as the backdrop.** Missouri Governor Matt Blunt selected Youth In Need as the stage for signing House Bill 184 into effect on July 5, 2007. Rep. Tom Dempsey, R-St. Charles, created the legislation, known as the Children's Services Protection Act. In 2004, St. Charles County passed a 1/8-cent sales tax to create a Community Children's Service Fund to fund mental health and substance abuse services for young people. Youth In Need receives approximately \$1 million from this Fund to support its Transitional Living Program, Teen

Parent Program, Emergency Shelter, Outclient Counseling and Safe Place programs. This legislation ensures that money collected from the tax isn't diverted to other projects and will apply to all cities or counties who levy a sales tax for the purpose of creating a community children's services fund. Gov. Blunt and other local dignitaries signed the Bill into law at the Scheidegger Family Youth In Need Center in St. Charles.

- **Starbucks featured Youth In Need at the opening of a new store.** The Starbucks at Highway 370 and Elm in St. Charles partnered with Youth In Need on July 7, 2007, to raise money for the agency. Customers paid \$5 at the door and received a beverage of their choice in return. Students in Youth In Need's ExCEL program read poetry to guests. The event raised more than \$300 for Youth In Need.

- **Bell Electrical Contractors held the first-ever motorcycle ride for Youth In Need.** On July 14, 2007, Bell Electrical Contractors held a 150-mile motorcycle ride to benefit Youth In Need. The ride began at Bell's headquarters in Maryland Heights and ended at Grappa Grill in St. Charles. Twenty-five motorcycle riders and passengers participated in the ride and raised \$1,100 from registration fees, T-shirt sales and 50/50 ticket sales.



Riders start their engines to begin the motorcycle ride for Youth In Need.

August

- **Youth In Need launched its new agency-wide wellness program for employees.**

The health and well-being of Youth In Need's employees is a priority. To help staff achieve that healthy lifestyle, the agency implemented a new wellness initiative. Youth In Need has provided resources to staff to help them meet their goals. The program covers any issue that affects an employee's wellness, including stress management, work/life balance, exercise, eating right, smoking cessation, healthy cooking, money management, disease management, annual



Jim Braun, Youth In Need's President and CEO, accepts a check from Steve Dunning with Title Sponsor Smurfit-Stone.

physicals, preventative medical care, depression and sun, home and driving safety.

- **Hundreds of golfers withstood scorching temperatures to support Youth In Need.** Youth In Need held its 10th annual Golfing for Youth Benefit Tournament, presented by Title Sponsor Smurfit-Stone, on Aug. 13, 2007, at Whitmoor Country Club. The tournament raised a record-breaking \$104,000, a 20 percent increase from the previous year. Because of the heat, the Culpeppers'-catered lunch and registration was moved indoors to the clubhouse so golfers could cool down before they heated up the two courses. More than 200 golfers played a four-person scramble over 18 holes. Golfers bid on a variety of silent auction baskets, and Glenn Zimmerman, Fox 2 Meteorologist, served as the oral auctioneer.

- **Community supporters "adopted" Youth In Need during the agency's school supply drive.** Youth In Need received an astonishing amount of school supplies from community groups, businesses and Kenny Chesney concert-goers. These groups supported Youth In Need's children, teens and families with more than \$9,500 in school supply donations.

- **The Primrose Foundation generously supported Youth In Need by donating \$500 in Target gift cards.**



Victoria Harrington, Community Relations Manager, collects donations at a 93.7 The Bull-sponsored donation drive during the Kenny Chesney concert.

September

- **Youth In Need's Safe Place program had a "blast" in September.** The St. Charles Chamber of Commerce played host to the second annual Blast, a free family fun day, on Sept. 22, 2007, at New Town in St. Charles. Youth In Need's Safe Place program had a booth at the Blast, incorporating the Emergency Shelter and Street Outreach Program in educating the community about how Safe Place helps children and teens. Safe Place also offered discounted registration prices to new sites joining at the event.

- **GoodSearch added a new feature to the ways it supports charities.** GoodSearch is an online search engine that donates a portion of its advertising revenue to charities that register with the site. GoodSearch expanded the way it offers support by adding GoodShop to the site. GoodShop is an online shopping mall, where merchants donate a percentage of shoppers' purchases to the charity the shopper designates.



Kids learn about Safe Place at the annual Blast event in New Town.

October

- **Emergency Shelter teens enjoyed a cooking lesson at a local Italian eatery.** Pete Pulizzi, owner of Erio's Ristorante, held a "cooking with basil" class for the Emergency Shelter children and teens. The teens brought fresh basil from the agency's garden to use in their pasta and pizza dishes. After the class, the teens enjoyed the dishes they helped create.



Photo by Michael Schlueter
From left: 2007 Board Chair Jerry Daniels, State Farm's George Aliano, President and CEO Jim Braun and State Farm's Rusty Shelley. Aliano and Shelley presented the tournament check to Braun.

- **State Farm held its second annual golf tournament to benefit Youth In Need.** State Farm Insurance held the tournament at the Missouri Bluffs Country Club on Oct. 8, 2007. Through golf registrations, the Deal or No Deal game, 50/50 ticket sales and a live auction, the tournament raised in excess of \$14,000 for Youth In Need.

- **Target awarded a grant to Youth In Need.** Target awarded \$4,500 to Youth In Need in support of its Head Start program and Emergency Shelter. Since 1946, Target has donated five percent of its income to communities, supporting education, the arts and safe families and communities.

November

- **Youth In Need gave thanks to those who made 2007 a great year.** Youth In Need's Thanks for Giving event, an annual recognition reception for donors and volunteers, was held on Nov. 14, 2007, at the Scheidegger Family Youth In Need Center. Youth In Need honored many volunteers and donors who had an instrumental involvement in the agency's programs. One award recipient received a standing ovation for his comments. Orvin Kimbrough, Vice President of Major and Planned Gifts for the United Way of Greater St. Louis, was the recipient of the James A. Braun Champion of Children Award. He grew up in the foster care system and has met and overcome many personal challenges in his life. In Kimbrough's heartfelt speech, he eloquently reminded guests why the evening's honorees are committed to helping children and families succeed. "On the Youth In Need Web site, I saw the statement: 'When young people believe they have a future, life changes,'" Kimbrough said. "Not too long ago, I was a young person who did not believe. I was a young person without hope...I believe that each one of us in this room has a story...I celebrate you....All that you have done and all that you will do to help Youth In Need give the broken back their dreams. It was agencies like Youth In Need that helped me reconnect to my dreams. And I am fortunate to be one voice for the many children who are struggling along life's journey."



Photo by Michael Schlueter
Gary Dollar, President and CEO of the United Way of Greater St. Louis, and Orvin Kimbrough, recipient of the James A. Braun Champion of Children Award.



Members of the the Warrenton Head Start male involvement group and their children on a pumpkin patch outing.

- **Men in Warrenton Head Start program united to support their children.** Two fathers, whose children attend the Marvin Marks Child Development Center in Warrenton, organized the program's Male Involvement Group. They encourage fathers, boyfriends, uncles, grandfathers (or any other male who cares about a child in his life) who have children in the Head Start and Early Head Start program to get involved. The group meets monthly and plans activities that the men can do with the children in their lives.

- **The St. Louis City Head Start program celebrated Thanksgiving.** The students at the St. Louis City Head Start Center enjoyed a Turkey Day celebration. Children and teachers in each classroom enjoyed a Thanksgiving lunch of a whole roasted turkey and sides, and for a snack, they had pie. Both American and new American children were very excited about the meal and the history behind the holiday.

December

- **Youth In Need partnered with United Way and KMOX to spread the agency's mission.** KMOX began a new advertising program that offered United Way agencies an opportunity to purchase heavily discounted air time. Youth In Need aired a package of eight, one-minute ads in December. Youth In Need will be taking advantage of this exciting opportunity three additional times in 2008.

- **Old Newsboys featured Youth In Need in its gala video.** The Old Newsboys, long-time supporters of Youth In Need, featured an interview with President and CEO Jim Braun and some photos of Youth In Need programs in action in a video that aired at the group's dinner and gala in December.

- **The Emergency Shelter spread holiday cheer through "cookie madness."** The Emergency Shelter staff and children and teens staying there spread holiday cheer and messages of thanks by baking hundreds of cookies for those in the community who supported them in 2007. Neighbors, QuikTrip convenience stores, police departments and other Youth In Need staff were just some of those who received the Shelter's beautiful cookies.



Academy of the Sacred Heart students load food baskets into Youth In Need's van.

- **Youth In Need's holiday store provided gifts for Youth In Need children and families.** Program staff "shopped" at Youth In Need's holiday store in December, securing wonderful presents for the children, teens and families they serve. More than 40 area businesses and individuals adopted Youth In Need for the holidays, donating toys, clothes, games and warm winter wear. Through the community's generosity, Youth In Need was able to provide gifts for approximately 2,000 children and families who weren't able to receive aid elsewhere.

- **National Safe Place selected Youth In Need entries for its Heart of the Matter publication.** A student in Youth In Need's Out-of-School Time Program and his teacher created entries that were selected out of more than 400 to be included in National Safe Place's Heart of the Matter publication. Heart of the Matter is a collection of drawings and writings from Safe Place youth, volunteers and staff.



The Scheidegger Family
Youth In Need Center
1815 Boone's Lick Road
St. Charles, MO 63301
P: 636-946-5600
F: 636-946-2900
www.youthinneed.org

24-Hour Help Line: 636-946-3771

Believing in the power of potential, Youth In Need's mission is to provide nurturing environments and educational opportunities so children, youth and families will find safety and hope, achieve their goals, and build a positive future.

Founded in 1974, Youth In Need provides residential treatment, early-childhood, outreach, counseling, educational and employment programs to more than 10,000 children, teens and families at 30 sites in eastern Missouri each year. Youth In Need is accredited by the Council on Accreditation.

2007 Board of Directors

Gerald E. Daniels, Chair, *The Boeing Company*
Patricia Hernandez, Vice Chair, *Emerson*
Eliot S. Asyre, Vice Chair, *ACS HR Services*
Herbert Lesser, Vice Chair, *MLS Homes, Inc.*
Robert Kalinich, Treasurer, *Community Volunteer*
Kim Scheidegger York, Secretary, *Corporate Group*
Rick Leach, Immediate Past Chair, *Trans States Airlines*
James A. Braun, President & CEO, *Youth In Need*

Directors

Diana Baumohl, *Express Scripts*
Rebecca Leah Bennett, *Vector Communications Corp.*
Frank Conard, *Busch & Conard, P.C.*
Carol Conoyer, *Community Volunteer*
Mallory Epperson, *Student*
Cathy Glosier, *Community Volunteer*
Carol E. Goldman, *Centene Corporation*
Ed Harris, *Community Volunteer*
Kathleen Hodson, *Cisco Systems*
Manuel Joaquim, *Community Volunteer*
Susie Johnson, *Coldwell Banker Gundaker Realtors*
Carl Jung, *Cisco Systems*
Carolyn Koenig, *Wachovia Securities*
John F. Mahon, *HOK Group, Inc.*
Cheryl M. Manley, *Charter Communications*
Tracy Mathis, *Lewis Rice & Fingersh, L.C.*
Patti McKelvey, *McKelvey Properties*
Elisabeth McManus, *Community Volunteer*
Paul Middeke, CPA, *Lutheran Church - Missouri Synod*
Lee Miesner, CPA, *Larson Allen Weishar & Company*
Steven C. Mizell, *Monsanto*
James W. O'Neill, *The Boeing Company*
Sue Neumann, *Smurfit-Stone*
Gwen Packnett, *University of Missouri-St. Louis*
Valerie E. Patton, *St. Louis Business Diversity Initiative*
James J. Rau, *New Frontier Bank*
Alison Reise, *Innsbrook Resort and Conference Center*
Raymond K. Rikimaru, *Rikimaru & Associates*
Jay Savan, *Towers Perrin*
Fred Schaber, *The Boeing Company*
Frank J. Siano, *HealthCare USA*
Paul Spahn, D.C., *The Health Centers*
Patrick S. Sullivan, *Home Builders Association*
Leo Tigue, Jr., *Kurrin & Richards*
John M. Tracy, *Dot Foods, Inc.*
Blaine Vaszily, *JM Family Enterprises, Inc.*
Fran Ventimiglia, *Community Volunteer*
John Winkelmeier, *D & L Rideout Towing*

Advisory Board

Tom Centorbi, *Gateway Financial Resources*
Marianne Chase, *We Design*
Dorothy Conway-McGowan, *The Conway Group*
Joy Ebest, Ph.D., *Community Volunteer*
Margaret Feldewerth, *Community Volunteer*
Robin Gramlich, *Gramlich Power*
Willard R. Harrell, *State Farm Insurance*
Tricia Jones, *Community Volunteer*
Donald Kalicak, *St. John's Mercy Health Care*
Fred Newman, *Community Volunteer*
Grace Nichols, Sr., *Judge, Retired*
Gregory Rupp, *Rupp & Assoc.*
Paula Walters, *Community Volunteer*
Joyce Williams, *Branson County Getaway*

Policy Council Chairperson

Jennifer Jackson (Head Start West)
Lateefah Watson (City Head Start)

Capital Campaign Committee

Campaign Co-Chairs

Jerry Daniels	Herb Lesser
Jerry Scheidegger	Frank Martinez
	Paul Middeke
	Steven Mizell
	Maurice & Brenda Newberry
Eliot Asyre	James W. O'Neill
Hank Clever	James J. Rau
Cathy Glosier	Daniel A. Rodrigues
Rick Leach	Darrell Roegner
Wayne Baker	David Ross
Rudy Beck	Jay Savan
Harold Burkemper	Gary Shaw
Dave Cosby	Frank Siano
Lisa Dinga	Heidi Sowatsky
Fred Dyer III	Patrick S. Sullivan
Carol E. Goldman	John Tracy
Teesha Hernandez	Jim Trenary
Tom Hughes	Blaine Vaszily
Vince Johnson	John Winkelmeier
Bob Kalinich	
Carolyn Koenig	
Melanie Lapidus	

Executive Management Team

James A. Braun, *President & CEO*
Pat Holterman-Hommes, *Senior VP, Youth Programs*
Larry Van de Riet, *Senior VP, Facilities & Administration*
Linda Armstrong, *VP, Head Start - City*
Daryl Rothman, *VP, Head Start - West*
Tricia Topalbegovic, *VP, Human Resources*
Bob Bertolino, *Senior Clinical Advisor*
April Delehaunty, *Senior Director, Quality Improvement*
Michelle Gorman, *Senior Director, Program Evaluation*
Marissa Pulizzi, *Senior Director, Development*

About Youth Update

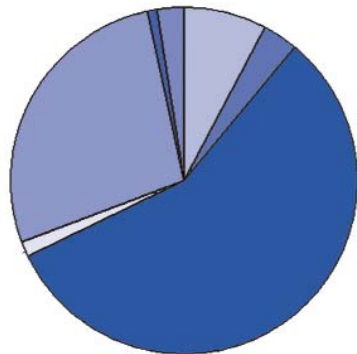
Upon request, individual names may be placed on our mailing list. Please inform us of any address change or correction, or of those individuals who have moved, died or are no longer interested in receiving the newsletter. Please send this information, with the zip code of the previous address, to:

Youth In Need's Development Office
1815 Boone's Lick Road
St. Charles, MO 63301
E-mail: development@youthinneed.org

Please forward all communications with reference to editorial content to April Klutenkamper, Marketing Director, at 636-946-5600, ext. 200, or aklutenkamper@youthinneed.org.

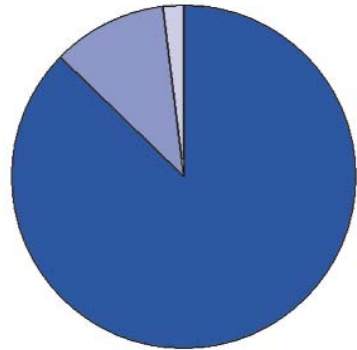
2007 Financial Report

Revenue



- Government Grants (57%)
- Client Fees (1%)
- State & Local Government Contracts (28%)
- United Way (2%)
- Capital Campaign (3%)
- Contributions (including net Special Events) (8%)
- Program Revenue - School Districts (1%)

Expenses



- Program Services (87%)
- Management & General (11%)
- Fundraising & Capital Campaign (2%)

Revenue

Contributions (including net Special Events)	\$ 1,017,487
Capital Campaign	\$ 434,555
Government Grants	\$ 7,370,618
Client Fees	\$ 165,904
State & Local Government Contracts	\$ 3,595,987
Program Revenue - School Districts	\$ 114,300
United Way	\$ 320,285
Miscellaneous	\$ 31,359
Total Revenue	\$ 13,050,495

Expenses

Shelter	\$ 747,035
Outclient Counseling	\$ 268,650
Community Youth Development	\$ 1,074,002
Foster Care Program	\$ 281,396
Cornerstone	\$ 219,595
Early Childhood Programs	\$ 7,626,779
Transitional Living Program	\$ 686,645
Total Program Services	\$ 10,904,102
Management & General	\$ 1,343,466
Fundraising	\$ 205,289
Capital Campaign Expenses	\$ 40,423
Total Expenses	\$ 12,493,280

2007 Year-End Net Assets \$ 3,280,252

Financials are based on 2007 unaudited results. An audited 2007 financial report will be available in July 2008 online at www.youthinneed.org. A 2006 audited financial report is available upon request.

2007 Program Achievements at a Glance

Youth In Need's 2007 program outcomes are based on standardized evaluation tools. Here are a few of the highlights as well as other program achievements.

Total individuals served (all ages): 10,184

Residential Programs

Emergency Shelter

The Emergency Shelter is a 12-bed emergency residential center for male and female children and teens, ages 10-18, who are in crisis. This temporary program is structured to meet the unique needs of each child and teen, providing a safe haven from abuse, a "family timeout" to provide a cooling off period and shelter for homeless children and teens.

Transitional Living Program

The Transitional Living Program (TLP) group home is a 10-bed transitional living program for males and females, ages 16 to 21, including pregnant or parenting teens and their children. The program provides the basic needs of housing, food, safety and financial security by helping teens save money for their future while they develop and learn the basic independent life skills necessary to be independent and lead productive lives. A second component of the program is the Independent Living Program (ILP), scattered-site apartments that provide the next step in the continuum of services.

- 295 clients served in the Emergency Shelter.
- 52 clients served in TLP/ILP.
- 81.2 percent of teens report they live in a safe situation after leaving their residential program, a 47.9 percent increase from when they entered the program.

Outclient Counseling

(Includes Counseling and Teen Parent Program)

Outclient Counseling

The Outclient Counseling program offers individual, family and group counseling services to children and families, living in St. Charles County.

Teen Parent Program

The Teen Parent Program provides individual and group support to teen parents and

pregnant teens in St. Charles County. The program offers counseling, case management, education, advocacy and childbirth classes.

- 454 clients served (in all counseling programs).
- 95.4 percent of teens in the Teen Parent Program had healthy pregnancies and deliveries.
- 88 percent of youth attending counseling showed improved family and social functioning.

Community Youth Development Programs

(Includes Out-of-School Time Programs, Street Outreach and Safe Place)

Out-of-School Time Programs

The Out-of-School Time Programs (OST) provide before- and after-school services for school-age children between the ages of 5 and 12 in 10 St. Louis City Public Schools.

- 1,223 clients served.
- 245 children completed pre- and post-tests in areas of reading, writing and coping skills during the 2006-2007 school year. Of those tested, all showed improvements in all areas, with the largest improvement in reading skills.

Street Outreach

The Street Outreach Program targets the needs of at-risk, runaway and homeless youth by providing tangible items, such as food, clothing and hygiene products to street youth through a mobile outreach unit. Another program component is the Drop-In Center, a safe place where teens can come to do laundry, hang out, participate in recreation activities, receive one-on-one resume assistance, get help with job searches, have someone to talk to and a place where they can just be themselves.

- 1,721 clients served.
- 1,570 street contacts were made.
- 112 teens were transitioned to safety.

Safe Place

Project Safe Place is a national crisis prevention program for children and teens. Youth In Need is the regional provider of Safe Place services. If a young person needs help, he or she can go to any business displaying the yellow and black Safe Place sign. All sites call Youth In Need's 24-Hour Help Line, and a Safe Place case worker is immediately sent to

pick up the child or teen, assess the situation and provide assistance.

- 18 children and teens in crisis received help through Safe Place.
- 82 new businesses joined as sites.
- 7,621 children and teens learned about the program through 72 presentations.

Head Start and Early Head Start

The Head Start and Early Head Start program serves low-income families, with children from birth to 5 as well as expectant parents, in St. Louis City, St. Charles City and County, and Lincoln, Warren and Montgomery Counties in Missouri. The program provides developmental services, including education, inclusion of children with disabilities, vision, hearing and developmental screenings, nutritious meals and snacks, health services, family involvement opportunities, parent education, identification of family needs and community resource information to prepare children for kindergarten.

- 1,616 children served; 4,756 family members served.
- The children who left the program to enter kindergarten in August 2007 were ready to learn by showing age-appropriate or better skills in vocabulary, math and science skills. Specifically, children experienced a 34 percent increase in skills such as math, science, letter recognition and social skills.

Foster Care and Adoption

Youth In Need and three other organizations (Family Resource Center, Urban Behavioral HealthCare and Epworth Children & Family Services) form the Children's Permanency Partnership (CPP). Family Case Managers work intensively with children and families to address issues that led to out-of-home placement, and to secure stable and safe, permanent living situations for each child. Permanency plans may include reunification with biological parents, kinship care, adoption or an alternative arrangement, such as independent living. The program serves children, ages birth to 18, living in St. Charles County and St. Louis City.

- 56 clients served.
- 100 percent of children or teens who obtained a permanent living situation did not re-enter into the state's custody.

Youth In Need's Annual Roll of Giving

Youth In Need recognizes, with gratitude, its most passionate supporters.

The list below indicates cash gifts to Youth In Need's annual fund, received between Jan. 1 and Dec. 31, 2007. It does not include capital campaign donors, corporate partners or event sponsors. Those lists are found on following pages.

Note: We have made every attempt to list names accurately. We regret any errors or omissions. If your name is in error, please contact Youth In Need's Development Office at 636-946-5600.

Founder's Circle \$10,000 and Above

Ameriprise Financial Community Relations Program
Mr. and Mrs. Eliot Asyre
Mr. and Mrs. Ben Blanton
Mr. and Mrs. Jeffrey Blanton
Mr. and Mrs. Les Buechele
Dr. and Mrs. J. M. Conoyer
Mr. and Mrs. Gerald E. Daniels
Daughters of Charity Healthcare Foundation of St. Louis
Employees Community Fund of Boeing St. Louis
Mr. and Mrs. David Greene
Home Builders Association
Mr. and Mrs. Art Johnson
Ms. Tracy Mathis
Mr. and Mrs. John F. McDonnell
McKelvey Properties
NAILBA Charitable Foundation
QuikTrip Corporation
The Reding Co., LLC
Shelley State Farm Insurance
Mr. Frank Siano
United Way of Greater St. Louis, Inc.
Mr. and Mrs. Peter Werner

President's Circle \$5,000 to \$9,999

AT&T
Mr. and Mrs. Rudy Beck
Ben Hur Construction Co.
Mr. and Mrs. Richard E. Beumer
Mr. Robert L. Boschert
Mr. and Mrs. Curtis Burkemper
E. Walter Hausstette Charitable Foundation
Mr. and Mrs. Les Hager
Mr. and Mrs. Carl Jung
Kiwanis Foundation of Troy, Mo.
Mr. and Mrs. Robert MacDonald
Mr. and Mrs. Paul Middeke
Mr. and Mrs. Steven Mizell
Mr. and Mrs. George Scherer
Dr. Robert J. Schmidt, D.D.S.
Team-Work Rehabilitation, Inc.
TJX Foundation, Inc.
Tracy Family Foundation
Wal-Mart Foundation

Director's Club \$2,500 to \$4,999

AT&T Scroogebusters
Mr. and Mrs. James A. Braun
Herman T. & Phenie R. Pott Foundation
Mr. and Mrs. Ronald Koenig
Ladue News
Moneta Group Charitable Foundation
Montgomery Area United Way
Mr. and Mrs. Dan Pelikan
Rudd Equipment Company
Mr. and Mrs. Jay Savan
St. John United Church of Christ
Stauder Technologies
Suburban Journals Old Newsboys
Target Stores
Mr. and Mrs. John Waterhouse
Dr. and Mrs. Mark Zust

Visionary \$1,000 to \$2,499

Absolute Comfort Systems
Ms. Janet Barrow
Big Creek Quarry, Inc.
Mr. and Mrs. Howard Bittick

The Boeing Company Matching Gift Program
Ms. Margaret Bremer
Mr. and Mrs. Donald Burgess
Dr. Elizabeth Burns
Ms. Laverne Church
CitiMortgage, Inc.
Commerce Bancshares Foundation
Communications Workers of America Local 6310
Cuivre River Electric Community Trust
Dollar General Corporation
Drake Development, LP
DRS Technologies
Fort Zumwalt South Middle School
Gateway Big Dog Motorcycles
Dr. and Mrs. Thomas J. Harrison, Jr.
Herbert and Suzanne Lesser Family Foundation
Mr. J. Monty Hobson
Mr. and Mrs. Brett Hodson
Ms. Adele B. Hoffman
Mr. and Mrs. John Holahan
Hooters
Mr. Al Horvat
HSBC
IBM Charitable Contribution Campaign
Mr. and Mrs. Richard Jensen
Mr. Stephen Johnson
Mr. Donald Jones and Ms. Pat Vogelsang
Mr. and Mrs. Bob Kalinich
Kaplan Development & Investment
Kellwood Foundation
Mr. and Mrs. Dean Kent
Mr. and Mrs. Larry LeGrand
Mr. Howard N. Lesser
Mr. and Mrs. Frank Martinez
Mr. and Mrs. Randy McDonnell
Mr. and Mrs. Sanford McDonnell
Microsoft Matching Gifts Program
The Monsanto Fund
Mr. and Mrs. James W. O'Neill
Pfizer Foundation United Way Campaign
Ms. Dolores Rodrigues
Mr. Dan Rodrigues
Mr. and Mrs. Ivan Rothman
Mr. and Mrs. John M. Schoemehl
Mrs. Wilma Schuette
Mr. and Mrs. Robert Schuette
Dr. and Mrs. Thomas M. Siler
Dr. and Mrs. Paul Spezia
St. Peters Ambulatory Surgery Center, LLC
Mr. and Mrs. Patrick S. Sullivan
Mr. and Mrs. Kendrick E. Tella
Mr. Vincent Tellez
Mr. and Mrs. Steve Wilson
Mr. and Mrs. David York
Zombie Squad

Advocate \$500 to \$999

Aetna Foundation
Aspiring Angels
Mr. R. J. Baudendistel
Mr. and Mrs. James Berges
Mr. and Mrs. Gerald M. Butler
Mr. and Mrs. George Crump
Mr. and Mrs. John R. Dickmeyer
Didion Manufacturing Company
General Motors Corporation
Mr. and Mrs. Erik Goldman
Mrs. Grace Harmon
Mr. and Mrs. Wayne Hoffman
Mr. Wayne Holtmeier
Mr. Gary Howard
Jerry Kelly Heating & Air Conditioning
Mr. and Mrs. Bobby L. Jones
Ms. Nancy Kalishman
The Lois Lenski Covey Foundation, Inc.
Mr. and Mrs. Michael Mack
Mr. and Mrs. Lee Miesner
Mr. and Mrs. Kevin Pallardy
Mr. and Mrs. Vernon S. Prinster
Mr. and Mrs. Rick Restivo
Mr. and Mrs. Jerry Ritter
Mr. and Mrs. Robert Rogers
Ms. Vicki Ryan
Sam's Club Foundation
St. Charles Jaycees
St. Louis Christmas Carols Assoc.
Mr. and Mrs. Curt Terrace
Mr. and Mrs. Blaine Vaszily
Mr. and Mrs. Jeff Viehmann
Mr. and Mrs. Al Wansing

Sponsor \$100 to \$499

Academy of the Sacred Heart
Mr. and Mrs. Larry Albright
American Legion Post 312

Ameriprise Financial
Mr. and Mrs. Chris Andrasko
Messrs. Todd and Jim Arkenberg
Dr. Loren Bannister
Mr. and Mrs. John Baumann
Mr. and Mrs. Robert E. Beumer
Bonus Building Care
Mr. and Mrs. Nicholas Boschert
Bremen Bank & Trust Company
Mr. and Mrs. Thomas W. Brown
Mr. and Mrs. William W. Brown
Mr. and Mrs. Philip Buker, Jr.
Mr. and Mrs. William Bunte
Mr. and Mrs. John E. Burke
Mr. and Mrs. Larry Burke
Mr. and Mrs. Robert Burns
Mr. and Mrs. Stuart Buroff
Carpet Linoleum Hardwood & Resilient Tile Layers Local 1310
Ms. Janet Casey
Mr. and Mrs. Chris Chivetta
Christ the King Lutheran Church
Mr. and Mrs. Thomas M. Ciembronowicz
Dr. and Mrs. John Commerford
Mr. and Mrs. Osmond Conrad
Curves for Women – Old Hwy 94 South
Mr. and Mrs. Christopher Dalton
DeBritt Catering
Mr. and Mrs. Matthew Delehaunty
Mr. and Mrs. John W. Dobson
Mr. Michael J. Dooley
Dr. and Mrs. Bernard Dubray
Ms. Jan Dunham
Mr. and Mrs. Daniel Dzedzic
Mr. and Mrs. Ken Eise
Mr. Darrell Emge
Ms. Ann Erlinger
ESA Foundation
Evangelical Children's Home
Ms. Mary Ferguson
Mr. and Mrs. John Field
Mr. and Mrs. William Foley
Mr. and Mrs. William Frailey
Mr. and Mrs. Kim M. Fraser
Mr. and Mrs. Carl G. Frederick
Frontenac Bank
Mr. and Mrs. Robert Fulks
Gateway Creative
Mr. Mick Eskew and Mrs. Kathleen Geist-Eskew
Mr. and Mrs. George Gladis
Greater Missouri Builders
Mr. and Mrs. Phil Greco
Mr. and Mrs. Richard Greene
Mr. and Mrs. Coray Grove
Mr. and Mrs. Keith Heien
Mr. and Mrs. Mark S. Hizer
Mr. and Mrs. Brian Hodges
Hoff Heating & Air Conditioning
Mr. and Mrs. Glen Holt
Horstmann Brothers
Mr. and Mrs. Richard L. Hughes
Mr. and Mrs. Les Huster
Immaculate Conception Church
Mr. Craig S. Ingraham
JM Family Enterprises, Inc.
Ms. Pauline Keinath
Kirkwood Spine & Rehabilitation
Kiwanis Club of Harvester
Mr. and Mrs. Brian Klutenkamper
Dr. and Mrs. Ronald Kreienkamp
Ms. Lea Ann Kruse
Mr. and Mrs. Patrick S. Lane
Lanning International
Levinson Homes
Lewis & Clark Restaurant
Mrs. JoAnn Londoff
Mr. and Mrs. Philip Lucido
MasterCard International
Dr. J. Curtis McMillen
Men's Activity Club
Mercy Health Plans
Midwest Window Tinting
Missouri Employers Mutual
Mr. and Mrs. Alan S. Morrisson
Ms. L. Diane Nagy
Mr. and Mrs. Clair Navarrette
Old Hickory Club
Optimist Club of St. Charles
Mr. and Mrs. Harlan Pals
Mr. and Mrs. Randall Penberthy, Sr.
Performance Plumbing Inc.
Mr. and Mrs. Robert Phelps
Dr. and Mrs. William Poggemeier
Ms. Patricia A. Prager
Progressive Leadership Solutions, LLC
Psychological Network, Inc.
Mr. and Mrs. Daniel Pugh

Quality Lawn Service
Mr. and Mrs. Norman Quandt
R.C. Printing Services
Mr. and Mrs. Timothy Reeves
Mr. and Mrs. Bruce Robb
Rotary Club of Warren County
Ms. Beatrice Rothberg
Roy Cox Plumbing
S J. Hollander, Architect
Mr. Barry Sandweiss
Mr. and Mrs. Walter Schirr
Mr. Jeff R. Schlattman
Ms. Marilyn Schnuck
Mr. and Mrs. Victor Schulte, Jr.
Ms. Sue Shriver
Mr. and Mrs. David Smith
Mr. and Mrs. Donald Solomon
Sommer & Associates, CPAs, LLC
Mr. and Mrs. George Stachecki
Ms. Katherine Stacy
Starbucks Coffee Company
Mr. James Stejskal
Mrs. Joyee Stomberg
Talent Plus
TB Realty Development
Mrs. Ellen Thoma
Mr. Craig M. Tompkins
Trailhead Brewing Co., LLC
Vatterott Foundation
Mr. and Mrs. E. David Viehmann
Mr. and Mrs. Richard Viehmann
Vogel Sheet Metal & Heating, Inc.
Ms. Sheri Warner
Dr. and Mrs. J. Stafford Weeks
WellPoint Foundation – Wellpoint Associate Giving Campaign
Mr. and Mrs. Glynn Williams
Mr. and Mrs. James Wuertz
Ms. Risa Zwerling

Friend \$1 to \$99

Abitibi-Consolidated Corp,
Ms. Kristine Ahlemeyer
Mr. and Mrs. Brady Amelung
American Legion Post 313
Mr. and Mrs. Edward Appelbaum, Jr.
Mr. and Mrs. Jay Baumohl
Mr. and Mrs. Harvey Berg
Mr. and Mrs. John Berg
Mr. and Mrs. Troy Bergman
Mr. Cameron Bickmeyer
Bill's Body Shop
Mr. and Mrs. James Boedeker
Mr. and Mrs. Robert Boles
Mr. and Mrs. William F. Bowen
Brian D. Ahrens, CPA, PC
Mr. and Mrs. James Broadley
Mr. and Mrs. Ron Brunnert, Jr.
Mr. and Mrs. Alfred W. Budde
Ms. Rebecca Burke
Ms. Theresa Carlson
Mr. and Mrs. Ferman Carrillo
Mr. and Mrs. Dennis L. Casey
Mr. Doug Chandler
Ms. Barbara J. Chesman
Mr. James Cittadino
Mr. and Mrs. Joe Claes
Mr. and Mrs. John Clancy
Mr. and Mrs. Bruce Clark
Mr. and Mrs. Gerald Cluny
Ms. Sally Cobb
Mr. and Mrs. Dennis Cruitt
CTS
Dr. and Mrs. Thomas C. Delaney
Mr. and Mrs. Michael Delehaunty
Mr. and Mrs. John Doucette
Mr. and Mrs. Robert Dresner
Ms. De Jean Dufek
Ms. Mariah E. Echele
Mr. and Mrs. Roger Edwards
Ms. Stacy Elliott
Mr. Tom Fee
Mr. and Mrs. Kevin Fete
Mr. and Mrs. Henry Fischer
Mr. and Mrs. William Fondell
Ms. Cara Frett
Friedens United Church of Christ Women's Guild
Mr. and Mrs. Carl R. Garrett
Ms. Gina Gendron
Mr. and Mrs. Robert Gralike
Ms. Martha Green
Ms. Mary Grimes
Mr. and Mrs. Dennis Hall

See *Annual Roll of Giving*, continued on page 6

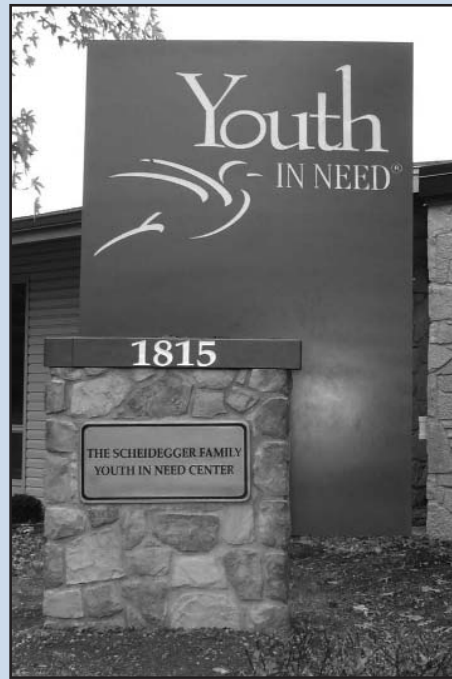
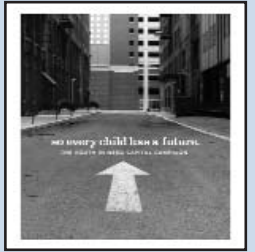
Annual Roll of Giving

continued from page 5

Mr. and Mrs. Steven Heidenreich
 Mr. and Mrs. Peter P. Hogan
 Mr. and Mrs. Jerry Holdenried
 Holiday Inn
 Mr. and Mrs. James Holterman
 Mr. and Mrs. Donald Hunt
 Ms. Minnie Hursey
 Ms. Lucille Huslage
 Mr. and Mrs. Todd Jansen
 Mr. and Mrs. Robert J. Jones, Sr.
 Ms. Sandra Kallaos
 Mr. and Mrs. R. Todd Kimball
 Mr. and Mrs. Ronald Koenig
 Mr. and Mrs. Bill Koob
 Mr. Jason Kujath
 Mr. and Mrs. David Landis
 Ms. Denise Lay
 Mr. William Leffingwell
 Ms. Lesley Levin
 Mr. David W. Levy
 Rev. and Mrs. David R. Liefeld
 Mr. and Mrs. Fred Lydic
 Main Street Gym
 Ms. Patricia Maul
 Ms. Sarah L. Mayfield
 Mr. and Mrs. Scott McAmis
 Mr. and Mrs. Heath McCann
 Mr. and Mrs. Donald McGovern
 Mrs. Wilma E. Messing
 Mr. and Mrs. Warren Michener, Jr.
 Ms. Regina Miller
 Missouri Probation & Parole Office
 National Shrine of Our Lady of the Snows
 New Florence United Methodist Church
 Mr. and Mrs. Fred Newman
 Judge Grace and Mr. John Nichols
 Mr. and Mrs. Robert Norrenberns
 Mr. James Ortbals
 Mr. and Mrs. Dennis Parker
 Parkview Gardens Florist and Greenhouse
 Ms. Stephanie Passanisi
 Ms. Christine Peoples
 Ms. Christina Perrino
 Mr. and Mrs. Rustin Raleigh
 Judge Lucy D. Rauch
 Ms. Annette Ravens
 Mr. and Mrs. Daniel Rees
 Ms. Kathleen Reimer
 Mrs. Dolores Reller
 Mr. and Mrs. Keith Roberts
 Dr. and Mrs. Paul Rother
 Mr. Roger E. Russell
 Mr. and Mrs. J. Konrad Sauer
 Mr. and Mrs. Steve Saunders
 Ms. Ellen Schaffner
 Mr. and Mrs. Roy Schieszer
 Mr. and Mrs. Gerald Scholle
 Mr. Ted E. Schuessler
 Ms. Lynne Schulte
 Mr. and Mrs. Jay Schultehenrich
 Mr. and Mrs. David Scott
 Mr. and Mrs. Brad Seaman
 Mr. Dane Sears
 Mr. Michael Sims
 Ms. Julie Sobell
 St. Cletus Catholic Church
 St. Elizabeth Ann Seton Catholic Church
 St. Joseph Health Center & Hospital West
 Mr. and Mrs. Glenn Stanza
 Mr. and Mrs. Allen Steinkamp
 Stifel, Nicolaus & Co
 Mr. and Mrs. C.B. Stitz, Jr.
 Ms. Joetta Strassner
 Mr. and Mrs. Maurice Thro, Jr.
 Mr. and Mrs. Mark Tringale
 Ms. Valerie Tripi
 Mr. and Mrs. Steven Troup
 Dr. Julie Turner
 Mr. Ronald Updegrave
 Ms. Lauren Vanderlist
 Dr. and Mrs. Gary VanMeter
 VFW Ladies Auxiliary Post No. 2866
 Mr. and Mrs. Edward Viehmann
 Mr. and Mrs. Lee Vint
 Ms. Kimberly Walls
 Mr. and Mrs. Steve Wasserman
 Ms. Lauren Wherley
 Mr. and Mrs. Mark Wiener
 Ms. Kathy Wise
 Mr. Wayne Wiskow
 Mr. and Mrs. Gerald Witthaus

So Every Child Has a Future Capital Campaign

Youth In Need has been conducting a \$3.5 million capital and endowment campaign, which has purchased the agency's new central office, built an endowment fund and funded facility repairs on several Youth In Need-owned facilities. Youth In Need is grateful to the following corporations, foundations and individuals who have generously pledged or donated \$2.5 million in cash or planned gifts toward the total of the *So Every Child Has a Future Capital Campaign*.



Youth In Need added permanent, lighted signage to its central office in St. Charles. Thanks to a lead gift from Jerry Scheidegger and his family, the building has been named the Scheidegger Family Youth In Need Center.

Capital Gifts \$500,000 and Above

The Scheidegger Family and Corporate Group, Inc.

\$100,000 to \$499,999

The Boeing Company
 Mr. and Mrs. Harold Burkemper
 The Dana Brown Charitable Trust
 Mr. and Mrs. Gerald E. Daniels

\$50,000 to \$99,999

Emerson
 JM Family Enterprises, Inc.
 Ms. Tracy Mathis
 The Monsanto Fund

\$10,000 to \$49,999

Anheuser-Busch Foundation
 Mr. and Mrs. Eliot Asyre
 The Boeing Company Matching Gift Program
 Mr. and Mrs. James A. Braun
 Centene Charitable Foundation
 The Edward D. Jones & Company Foundation
 Mr. and Mrs. Thomas Glosier
 Hoette Concrete Construction
 Innovative Technology Education Fund
 Mr. and Mrs. Manuel E. Joaquim
 Mr. and Mrs. Ronald Koenig
 Mr. and Mrs. Steven Mizell
 Mr. and Mrs. James W. O'Neill
 Ronald McDonald House Charities of Metro St. Louis, Inc.
 Mr. and Mrs. Bruce Sowatsky
 St. Louis Pipe & Supply
 Mr. and Mrs. Blaine Vaszily

\$5,000 to \$9,999

Mr. and Mrs. Les Buechele
 Dr. and Mrs. J. M. Conoyer
 HOK Group, Inc.
 Norman J. Stupp Foundation
 Mr. Frank Siano
 St. Charles Rotary Club
 Mr. and Mrs. Patrick S. Sullivan
 Thrivent Financial for Lutherans
 Mr. and Mrs. John Tracy
 Tracy Family Foundation

\$1,000 to \$4,999

Mr. and Mrs. Robert Baker
 BlackRock Financial Management
 City of St. Charles
 Mr. and Mrs. Danny Hommes
 Mr. and Mrs. Art Johnson
 Mr. and Mrs. Carl Jung
 Mayor's Charity Ball
 Mr. and Mrs. Lee Miesner

Mrs. Elizabeth Rauch
 Mr. and Mrs. Jay Savan

\$1 to \$999

A.L.S. Express, Inc.
 Ms. Stacy Altrup
 Ms. Linda Armstrong
 Baker Pool & Spa
 Ms. Cassidy Bange
 Mr. and Mrs. William Banmiller
 Mr. and Mrs. Michael Benton
 Ms. Rachael Berkowitz
 Ms. Natalie Bethel
 Ms. Carol Blankenship
 Ms. Dora M. Burdick
 Ms. Connie Burnett
 Ms. Carolyn Bush
 Ms. Deborah Butler
 Ms. Dianne Carson
 Coleman Entertainment, LLC
 Ms. Amy Collins
 Mr. and Mrs. Max McGowan
 Ms. Michelle Copeland
 Ms. Felicia Crenshaw
 Mr. and Mrs. Norman Dees
 Mr. and Mrs. Matthew Delehaunty
 Ms. Angeline Derr
 Ms. Pamela Donley
 Mr. Fred Dyer III
 Mr. and Mrs. Jon Eiters
 Mrs. Dawn Farmer
 Ms. Tiffany Flaherty
 Ms. Nancy Foster
 Mr. and Mrs. Robert Fusinatto
 Ms. Jana Gamble
 Mr. and Mrs. Erik Goldman
 Mr. and Mrs. Charles Gross
 Mr. and Mrs. Keith Heien
 Ms. Patricia Hernandez
 Mr. and Mrs. Brett Hodson
 Judge and Mrs. Ted House
 Ms. Natalie Hughes
 Ms. Terri Hurley
 Mr. and Mrs. Les Huster
 J & J Development
 Ms. Sharon Johnson
 Mr. and Mrs. Thomas Kendrick
 Ms. Traci Kerney
 Ms. Melanie Kessinger
 Mr. and Mrs. Jeremy Klutenkamper
 Ms. Robin Lambermont
 Ms. Margaret Lehan
 Ms. Anna Leighton
 Mr. and Mrs. Jerry Lewien
 Ms. Shanise Lewis
 Mr. and Mrs. Keith Lewis
 Ms. Angel Lichtenberg
 Ms. Fatima Mahmutovic
 Mr. and Mrs. John Mahon
 Ms. Gina Mason
 Ms. Tanya M. Matlach
 Mr. William McClain
 Mr. and Mrs. Douglas McIlhagga
 Microsoft Matching Gifts Program
 Mr. and Mrs. Paul Middeke
 Ms. Lisa Marie Monday
 Ms. Angela D. Mueller
 Ms. Gwendolyn Packnett
 Ms. Tricia Paschke
 Pilla Real Estate Company, Inc.
 Mr. and Mrs. David Pisarkiewicz
 Ms. Guadalupe Plaza
 Mr. and Mrs. Scott Potter
 Mr. and Mrs. Mike Pulley
 Mrs. Amy Putzler
 Ms. Zibijana Rakovic
 Mr. and Mrs. Rustin Raleigh
 Mr. and Mrs. James J. Rau
 Mrs. Edda Reviol
 Mr. and Mrs. Dave Riazi
 Mr. and Mrs. Stanley Rigdon
 Mr. Huey Rodeheaver
 Mrs. Joyce Rogers
 Mr. Daryl Rothman
 Mr. Thomas Sanger
 Mr. and Mrs. Fred Schaber
 Mr. and Mrs. Derek Sexton

Ms. Sara Sherrow
 Ms. Shannon Soucek
 Dr. and Mrs. Paul R. Spahn
 Mr. and Mrs. Gary Steinhoff
 Ms. Michelle Stephens
 Mr. and Mrs. Jeffrey D. Summers
 Ms. Christine Taylor
 Therapeutic Collaborations Consultation, LLC
 Mrs. Ellen Thoma
 Mr. and Mrs. Leo Tigue, Jr.
 Ms. Catherine L. Todd
 Mr. and Mrs. Jas Topalbegovic
 Ms. Melissa Van Booven
 Ms. Fran Ventimiglia
 Mr. and Mrs. Donald Vitt
 Ms. Beth von Behren
 Mr. and Mrs. Robert Wamhoff
 Ms. Lori A. Weil
 Mr. and Mrs. Steven Wilmes
 Mr. and Mrs. Gerald Witthaus
 Mr. David Wolff
 Mr. and Mrs. James Wright

Endowment Gifts \$500,000 and Above

Mr. and Mrs. Harold Burkemper

\$100,000 to \$499,999

Mrs. Virginia C. Boschert

\$50,000 to \$99,999

The Newberry Group, Inc.

\$10,000 to \$49,999

Dr. and Mrs. Henry W. Clever, M.D.
 Mr. and Mrs. Bob Kalinich
 Mr. and Mrs. Rick Leach

\$5,000 to \$9,999

Ms. Rebeccah L. Bennett
 Mr. and Mrs. John Dinga
 Dr. and Mrs. Joe Drozda

\$1,000 to \$4,999

Progressive Insurance Foundation
 Reuters
 Mr. and Mrs. Larry Van de Riet

\$1 to \$999

Ms. Elise Bagley
 Ms. Marissa Pulizzi



In November 2007, Youth In Need installed a custom-designed donor wall in the Scheidegger Family Youth In Need Center's lobby. The wall recognizes donors to Youth In Need's So Every Child Has a Future Capital Campaign, endowment gift donors and members of the Visionary Leader's Annual Giving Society.

**\$2.5 million of the
 \$3.5 million goal
 has been raised...
 So Every Child Has
 a Future**

Pave a Pathway to Potential: The Monsanto Fund Science Discovery Garden at Youth In Need

Gift with a Brick Program

In 2007, Youth In Need broke ground on its Monsanto Fund Science Discovery Garden. Join Youth In Need to see the completed garden in full bloom at the garden's dedication on May 4, 2008, at 1815 Boone's Lick Road in St. Charles.

Leave a Permanent Message of Hope

If you would like to honor or pay tribute to family or friends, do so with an engraved brick in Youth In Need's Monsanto Fund Science Discovery Garden. Engraved bricks leave a permanent message and forever memorialize loved ones. Bricks are \$125 and have room for a three-line message (14 characters per line, including spaces). Each brick purchase comes with a color certificate, depicting your brick's message. To purchase a brick, call the Development Office at 636-946-5600.



The Monsanto Fund Science Discovery Garden at Youth In Need is funded, in part, by lead gifts from the Monsanto Fund and Ronald McDonald House Charities of Metro St. Louis. Youth In Need broke ground on the garden, located at its central office on Boone's Lick Road in St. Charles, in spring 2007. A garden dedication is planned for May 4, 2008.

Gift with a Brick Donors

American Railcar Industries
Aspiring Angels
Mr. and Mrs. Eliot Asyre
Mr. and Mrs. Loren Babb
Mr. and Mrs. William Banmiller
Mr. and Mrs. John Basler
Mr. and Mrs. Dan Borgmeyer
Mr. and Mrs. James A. Braun
Ms. Dora M. Burdick
Ms. Jayna Cardetti
Ms. Janet Casey
Mr. and Mrs. Ashok Chawla
Mr. and Mrs. Mike Conoyer
Ms. Carol Craig
Mr. and Mrs. Gerald E. Daniels
Mr. and Mrs. Matthew Delehaunty
Mr. and Mrs. Mark Dunham
Mr. and Mrs. Cleo Estill
Ms. Mary Ferguson
Frontenac Bank - St. Charles
Mr. and Mrs. Robert Fusinato
Mr. and Mrs. Michael W. Gladbach
Mr. and Mrs. Tom Glosier
The Great Frame Up
Mr and Mrs. Robert Havens
Ms. Nancy Hazelwood
Mr. and Mrs. James Holterman
Mr. and Mrs. Danny Hommes
Mr. and Mrs. Jeff Honerkamp
Ms. Teresa House

Mr. and Mrs. Les Huster
Mr. and Mrs. Bob Kalinich
Katy View Garden Club
Mr. and Mrs. Jeremy Klutenkamper
Ms. Marilyn Klutenkamper
Mr. and Mrs. Ronald Koenig
Mayor and Mrs. Paul Lambi
Mr. Tom Liese
Mr. and Mrs. Bob Mastis
Mr. and Mrs. Paul Middeke
Mr. and Mrs. Rollin Moerschel
Mr. and Mrs. Tom Nolan
Ms. Guadalupe Plaza
Ms. Adriana Plaza
Ms. Marissa Pulizzi
Mr. and Mrs. Alan Rowold
Representative Joe Smith
Representative and Mrs. Joe Smith
Mrs. Ellen Thoma
Ms. Deloris Tucker
Mr. and Mrs. Larry Van de Riet
Vantage Credit Union
Mr. and Mrs. Blaine Vaszily
Ms. Fran Ventimiglia
Mr. and Mrs. Jeff Viehmann
Ms. Lindsey Viehmann
Ms. Sheri Warner
Mr. and Mrs. Steve Windler
Youth In Need Youth Programs Management Team
Youth In Need Head Start West Management Team



Left: Anita Viehmann (standing), Development Manager, reviews the garden's plans. Laurie Schoenecker (seated, left), Susan Rentfrow (seated, center) and Judy Wiegand (seated, right) designed the garden.

Below: A blueprint guided volunteers, workers and staff on the garden's development.



Above: Workers break ground on the garden.

Right: Installation of the three-tiered Koi pond was the first project in the garden.



Above: Teens staying in the Emergency Shelter were the first to use the garden. During their Shelter stay, teens attend school in the ExCEL classroom, located at Youth In Need's central office. They enjoyed a warm fall day near the pond while they wrote haiku poetry.



Right: The pathways are prepared for the concrete.



Left: A lead gift from Ronald McDonald House Charities of Metro St. Louis provided funding for a play structure, in addition to other motor skill development areas.

Below: Butterflies flock to the garden to enjoy the colorful flowers that attract them.



Above: Concrete for the pathways is poured.

Left: Bricks are sandblasted to reveal special messages. Engraved bricks are placed in three areas of the garden's pathways.



Above: Volunteers paint two picnic tables with garden-themed scenes.



Below: Volunteers build raised vegetable beds.



Left: Master Gardener Susan Rentfrow and her son Sage mix concrete for a special stepping stone project in the garden.

2007 Special Event Sponsors

Celebration of Youth

The support of honorees Rick and Mary Leach, many sponsorships, donations and ticket sales made Celebration of Youth a record-breaking success, raising \$288,194. Youth In Need is sincerely grateful for the exceptional support.

Premier Sponsors - \$10,000

Bombardier
GE Capital Aviation Services
Trans States Holdings, Inc.

Platinum Sponsors - \$5,000

American Eagle Airlines, Inc.
Burkemper Management Co.
Embraer
FlightSafety International
GE Aviation
Hamilton Sundstrand
Rick and Mary Leach
LJK Companies, Inc.
Parker Aerospace
Rolls-Royce North America

Gold Sponsors - \$2,500

ATR North America, Inc.
Centene Charitable Foundation
Future Aviation, Inc.
Liebherr Aerospace Saline, Inc.
McCarthy Building Company
Southwest Airlines
US Bank
Standard Aero

Silver Sponsors - \$1,500

Mr. and Mrs. Mike Boschert
Country Club Limousine
Jackson Brothers

Mr. and Mrs. Joseph Jacobs
The Lowenbaum Partnership
Mr. and Mrs. Mike Mohrmann
Ryan R. Cox and Associates, LLC
Saint Charles Magazine
Woodard Cleaning & Restoration Services

Bronze Sponsors - \$500

Mr. Peter Bowler
Carrollton Bank
Dr. and Mrs. Henry W. Clever, M.D.
Dr. and Mrs. Michael J. Conoyer
Corporate Group, Inc.
Crider Health Center
First State Bank of St. Charles
Ford & Harrison
Mr. and Mrs. Thomas Glosier
Goodrich Corporation
HOK Group, Inc.
Dr. and Mrs. Ed King
Lambert-St. Louis International Airport
Painting Unlimited
Mr. and Mrs. Jerry Ritter
Mrs. Elizabeth Rauch
Shea, Kohl, Alessi & O'Donnell, LC
Texas Air Composites
Towers Perrin
Dr. and Mrs. Jim Unger

Golfing for Youth

With the support of sponsors, donors and golfers, Youth In Need raised \$104,000. Youth In Need is sincerely grateful to those listed below, as well as many others, for their support.

Title Sponsor - \$10,000

Smurfit-Stone

Eagle Sponsor - \$2,500

Covenant Financial

Birdie Sponsor - \$1,500

Allied North America
Brown Smith Wallace, L.L.C.
Charles L. Crane Agency
Commerce Bancshares Foundation
Commerce Bank of St. Peters
Corporate Group, Inc.
Mr. Christopher Gentry
Mr. and Mrs. George Gladis
Huntleigh McGehee
Modern Business Interiors
Moneta Group
Nestle' Purina PetCare Company
Ms. JoHanna Roy
St. Louis Pipe & Supply
UMB Bank
Waste Management of St. Louis
Window World, Inc. of St. Louis

Par Sponsor - \$750

ADP
ATB Technologies
Bergfeld Recreation, Inc.
Ms. Michele Cilurzo
Commercial Letter
Hoette Concrete Construction
Mr. Brian Reeves

Tee Sponsors - Both Courses - \$500

ABBCO Service Corporation
CMR Construction & Roofing
Safety Services Co., Inc.
Quality Lawn Service

Tee Sponsors - Single Course - \$350

AAA Insurance
Amco Ranger Pest Control, Inc.
American Railcar Industries
Baue Funeral Homes
Bax Engineering Co., Inc.
Enterprise Bank & Trust
Representative Sally Faith
First Capitol Couriers
Holmes, Radford & Avalon, Inc.
Kohl Wholesale
Lindell Bank
Manlin Homes, LLC
Mr. and Mrs. Gerald Potthoff
Promotions Pronto, LLC
Rothman Furniture
United Parcel Service
Woodard Cleaning & Restoration Services
Yale Enforcement Services, Inc.

Cart Sponsors - \$500

Jerry Kelly Heating & Air Conditioning
Modern Business Interiors

19th Hole Sponsor - \$500

Land Works, Inc.

Trivia Night

Trivia Night wouldn't be successful without the support of sponsors and donors who helped raised more than \$6,200. Thank you!

Round Sponsors - \$100

Communications Workers of America Local 6310
T.R. Hughes, Inc.
Microsoft Corporation
Mr. and Mrs. Jeff Viehmann

Visionary Leaders Annual Giving Society

Youth In Need's Visionary Leaders Annual Giving Society recognizes benefactors who have made a major investment in Youth In Need's programs and its mission. Youth In Need established the Society to recognize those who have supported the organization with extraordinary generosity.

Donors will be invited to join upon: Investing in Youth In Need's annual fund with a one-time cash gift of \$10,000 or more (as of September 1 of the current calendar year) or investing with smaller cash gifts to Youth In Need's annual fund that cumulate and reach the \$10,000 threshold (as of

September 1 of the current calendar year). The Visionary Leaders Annual Giving Society membership is based on all cash gifts to Youth In Need's annual fund and excludes sponsorship support of special events, special event purchases and gifts-in-kind (effective January 1, 2005).

Youth In Need gratefully acknowledges all members of its Visionary Leaders Annual Giving Society. Thank you for your commitment to children, teens and families in need and for believing in the power of potential. As of September 1, 2007, we recognize the newest members of Youth In Need's Visionary Leaders Annual Giving Society. **Inductee names are identified in boldface type. Note:** Prior to January 1, 2005, all gifts, including gifts-in-kind, corporate partnership and special events were recognized for membership in the Visionary Leaders Annual Giving Society.

Pacesetter: Members with a lifetime giving total of \$500,000 or more in cash gifts to Youth In Need's annual fund.

Beckerle Preferred Properties*
Mr. and Mrs. Harold Burkemper

Leader: Members with a lifetime giving total of \$250,000 or more in cash gifts to Youth In Need's annual fund.

Bed Bath & Beyond *
Mr. and Mrs. Herb M. Lesser
Microsoft Corporation *

Benefactor: Members with lifetime giving total \$100,000 or more in cash gifts to Youth In Need's annual fund.

Dr. and Mrs. J. M. Conoyer
Fischer & Frichtel (John and Kari Fischer)
Greater St. Louis Community Foundation
Ray+ and Grace Harmon
Mr. and Mrs. Dennis Jones
Ms. Tracy Mathis
Mr. and Mrs. Paul Middeke
Ms. Jeanette Pickett
Daughters of Charity Healthcare Foundation
of St. Louis
Employees Community Fund of Boeing St. Louis
Lutheran Foundation of St. Louis
MLS Homes, Inc.

Investor: Members with a lifetime giving total of \$10,000 or more in cash gifts to Youth In Need's annual fund.

Mr. and Mrs. David R. Barry
Mr. and Mrs. Rudy Beck
Ms. Bernice L. Beckmann+
Mr. and Mrs. Richard E. Beumer
Mr. and Mrs. Jeffrey Blanton
Mr. and Mrs. James A. Braun
Mr. and Mrs. Phillip Buker, Jr.
Mr. and Mrs. Jerry H. Burchyett
Mr. and Mrs. Curtis Burkemper
Dr. and Mrs. Henry W. Clever, M.D.

Mr. and Mrs. Frank Conard
Mr. and Mrs. Gerald E. Daniels
Mr. and Mrs. John Dinga
Mr. and Mrs. Frederick W. Drakesmith
Mr. Stephen George
Mr. and Mrs. John Hannegan
Dr. and Mrs. Thomas J. Harrison, Jr.
Mr. and Mrs. Art Johnson
Mr. and Mrs. Richard Jensen
Mr. and Mrs. Manuel E. Joaquin
Mr. and Mrs. Richard Jones
Mr. and Mrs. Bob Kalinich
Mr. and Mrs. Joseph C. Kleba
Mr. and Mrs. Ron Koenig
Mr. and Mrs. Jeff Kolb

Mr. and Mrs. Rick Leach
Mr. and Mrs. Frank Martinez
Mr. and Mrs. Richard C. McBride
Mr. and Mrs. Robert M. McCutchan
Ms. Patricia McKelvey
Mr. and Mrs. Max McGowan
Mr. and Mrs. Kevin McMahlil
Mr. and Mrs. Stan Patterson
Mr. and Mrs. Mark A. Pearlstone
Mr. Ed Pundmann, Jr.
Mr. and Mrs. Sonny Purler
Mr. and Mrs. Gerard A. Putz
Mr. and Mrs. Scott Rutledge
Mr. Jerry Scheidegger
Dr. and Mrs. James Scheu
Dr. Robert J. Schmidt, D.D.S.
Mrs. Wilma Schuette
Mr. Burr Smith
Mr. and Mrs. Bruce Sowatsky
Dr. and Mrs. Paul R. Spahn
Mr. and Mrs. Leo Tighe, Jr.
Mr. and Mrs. John Waterhouse
Mr. and Mrs. Steven Weissinger
Mr. and Mrs. Peter Werner
Mrs. Mary Wilson
Mr. and Mrs. Steve Wilson
Mr. and Mrs. John Winkelmeier
Ameren Corp. Charitable Trust
American Express Foundation
Ameristar Casino St. Charles
BLI Transportation, Inc.
Baue Funeral Homes
Ben F. Blanton Construction

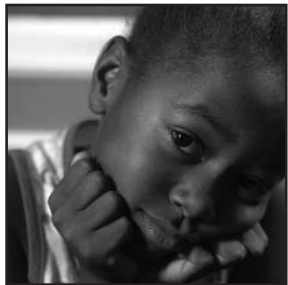
Boeing - McDonnell Foundation
Booneslick Charities
Commerce Bank of St. Louis
Community News & Community News O'Fallon *
Cottleville - Weldon Spring Rotary Club
The Corporate Group
Custom Coatings, Inc.
D & L Rideout Towing
Drake Development, LP A Missouri Limited
Partnership
Emerson
Enterprise Rent-A-Car Foundation
Fallon Crest Partners *
Findett Corporation
Fred Weber, Inc.
G & S Chicken Products, Inc.
General Motors Corporation
Hamilton Jewelers
Harmon Properties, Inc.
Herman T. & Phenie R. Pott Foundation
Home Builders Charitable Foundation
IBM Corporation *
Incarnate Word Foundation, Missouri
Jacobs Engineering Group, Inc.
Jordan Charitable Foundation
Joseph H. & Florence A. Roblee Foundation
Katee Hessler Memorial Fund
Krey Distributing Company
KSDK, Channel 5 *
Levi Strauss & Company
Levi Strauss Foundation
Levinson Homes *
Lichtenstein Foundation
Lincoln Industrial
MPP&W
MasterCard International
McKelvey Building & Homes, Inc
Mr. Logo, USA, Inc. *
Nestle' Purina PetCare Company
NFL Alumni - St. Louis Chapter
Oracle Corporation *
Paradigm Financial Group
Party City * (Manchester Road Location)
Party City * (Olive Location)
Party City * (Old Halls Ferry)
Pentair Foundation (on behalf of Lincoln Industrial)
Pershing Charitable Trust
Plato's Closet *

Plaza Lanes/Tubby's Pub 'n Grub
Porlier Outdoor Advertising *
Pundmann Ford
QuikTrip Corporation
RAVE #401, NW Plaza *
The Reding Company
SSM St. Joseph Health Center & SSM St. Joseph
Hospital West
St. Charles Eye Center
St. Charles Jaycees
St. Charles Mayor's Charity Ball
St. Charles Optimist Club
St. Charles Rotary Club
St. Charles Sunrise Rotary
St. John United Church of Christ
St. Louis Blues Hockey Office *
St. Louis Bread Company *
St. Louis Cardinals Pinch-Hitters
St. Louis Variety Club
St. Peters Rotary Club
Suburban Journals of St. Charles County
Team-Work Rehabilitation, Inc.
Boeing Company
Dana Brown Charitable Trust
Dennis M. Jones Family Foundation
Thrivent Financial for Lutherans
TJ Wies Drywall Co.
TJX Foundation, Inc.
T.R. Hughes, Inc.
Trans States Airlines
Trans World Airlines, Inc. *
Trio Foundation of St. Louis
U.S. Title Company
Unilever United States Foundation, Inc.
Union Pacific Foundation
Vantage Homes
Viragh Family Foundation
Voyager VIP Cruises & Tours, Inc. *
Wal-Mart Foundation
Walters Golf Management *
Western Union Financial Services, Inc.
Whittaker Builders, Inc.
William T. Kemper Foundation
Y98 FM Radio *

Note: * Indicates gift-in-kind donation
+ Indicates deceased member

Corporate Partners

Youth In Need gratefully thanks its 2007 Corporate Partners for investing in the community. In return for their donations, they receive special benefits, such as tickets to special events, Web site listings, and recognition at all annual fundraising events. The 2007 roster of Corporate Partners raised more than \$90,000 in support of Youth In Need's programs and services. Thanks to those individuals and businesses that have supported Youth In Need since the inauguration of this program in 2001. Their commitment has raised close to \$400,000. Those partners who have supported the program for multiple years are noted below.

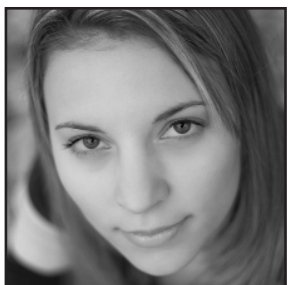


Principal Partner - \$15,000
Culpeppers Grill & Bar

Champion Partners - \$10,000
Jerry and Mary Beth Daniels (4 years)
The Boeing Company (5 years)
The Newberry Group (2 years)
The Reding Company, LLC
Trans States Holdings, Inc.

Guardian Partners - \$5,000
Hamilton Jewelers (7 years)
JM Family Enterprises, Inc.

Trustee Partners - \$3,000
Ameristar Casino, St. Charles (4 years)
Eliot and Diane Asyre
HealthCare USA



McCarthy Building Company (2 years)
RX Systems, Inc. (7 years)
St. Charles Sand Company

Patron Partners - \$1,500
Barnes-Jewish St. Peters Hospital (4 years)
Jim and Pam Braun (4 years)
DRS Technologies (3 years)
GSM Development
Teesha Hernandez
HOK Group (2 years)
Bob and Mary Beth Kalinich (4 years)
Frank and Charline Martinez (7 years)
Mid Rivers Newsmagazine
The Daniel and Henry Company
Thomson Printing (7 years)
Towers Perrin



Community Helps Children and Teens Find a Safe Place

Youth In Need became the regional provider of Project Safe Place in 2006.

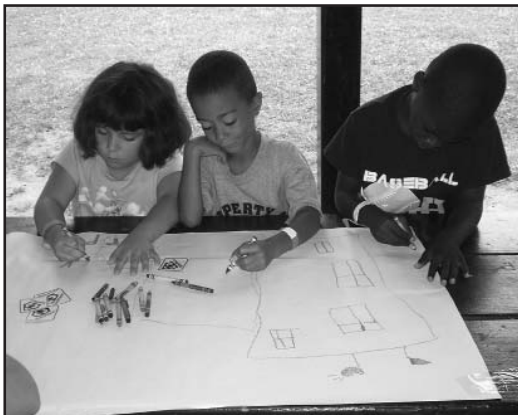
Safe Place is a national program, headquartered in Louisville, Ky. Safe Place operates in 40 states, partnering with local businesses to provide "safe places" for children and teens experiencing crisis.

Youth In Need gratefully acknowledges its community Safe Place partners—businesses that are committed to making every neighborhood safe for children and teens. Youth In Need gained 82 new businesses as Safe Place sites in 2007.



Ensure Every Child Has a Safe Place

Project Safe Place only works when the community comes together to support it. There are several ways to become part of this exciting initiative. Businesses can sign up to be Safe Place sites. Also, children can learn how to use Safe Place through free age-appropriate presentations at churches, schools and community groups. To become a Safe Place site, or to schedule a presentation, call Jayna Cardetti, Community Development Specialist, at 636-946-5600, ext. 251.



Children who attended a summer camp learned about Safe Place. After the presentation, they drew "safe places" in their neighborhood, then included Safe Place signs on the buildings.

Safe Places Sites in 2007

American Family Insurance – Yvonne Stewart
Barnes-Jewish St. Peters Hospital
Bogey Hills Baptist Church
Burns Family Denistry
Capital Solutions Lending
Citizens National Bank of Greater St. Louis
Coldwell Banker Gundaker – Seven locations
Commerce Bank of St. Charles
Community Living, Inc.
Concordia Lutheran Church
Crider Health Center – Wentzville
Crider Health Center – St. Charles
Curves for Women – Elm Street
Delta Center for Independent Living
Elm Point Early Childhood Center
Faith United Church of Christ
Faith United Methodist Church
Harvester Animal Clinic, Inc.
Intaglio Creative
Lawrence Florist
Matthias' Lot
New Frontier Bank – All locations
Paladin Group Inc.
Pattonville-Bridgeton Terrace F.P.D.
Pregnancy Resource Centers of Greater St. Louis
Premier Mortgage
Robertson Fire Protection District

Sk8 Galaxy
St. Andrews Cinema
St. Charles Chamber of Commerce
St. Charles Christian Church
St. Charles City-County Library District (All locations)
St. Cletus Catholic Church
State Farm Insurance Agency - Dave Schlansker
Timothy Evangelical Lutheran Church
UMB Bank - Regency Parkway
UMB Bank - Monticello Plaza
Verlo Mattress Factory
YMCA – Coronadet
YMCA – Downtown
YMCA – Edward Jones Family
YMCA – Emerson Family
YMCA – Kirkwood
YMCA – Lindenwood University Campus
YMCA – Mid-County Family
YMCA – Monsanto
YMCA – O'Fallon
YMCA – South City
YMCA – South County
YMCA – St. Charles County
YMCA – Tri-County
YMCA – Webster Groves
YMCA – West County Branch
YMCA – Wildwood

Memorials and Tributes

Memorials and tributes will remain a meaningful portion of the individual gifts Youth In Need receives each year. We deeply appreciate the following donors who remembered Youth In Need even as they reached out to friends and loved ones in times of joy and sorrow.

Note: We have made every attempt to list names accurately. We regret any errors or omissions. If your name is in error, please contact Youth In Need's Development Office at 636-946-5600.

In Memory Of...

Charles Bailey
Mr. and Mrs. James Nienhaus

Robert E. Baker
Mr. and Mrs. Stanley Rigdon

Bettye Daly
Mr. Fred Daly

Ruth Asser Gaffin
Buck Consultants, an ACS Company
Mr. and Mrs. Anthony Ciarleglio
Mr. and Mrs. Dwight Hardin
Ms. Rebecca Jerry
Mr. and Mrs. Bill Lane
Mr. Rick Hauck and Ms. Norma Lewis
Mr. Robert W. Powers
Mr. and Mrs. Gary Ebken
Mr. and Mrs. Dennis Kelley

Leigh Gramlich
Mrs. Shirley Steffy

Bob Miller
Mr. and Mrs. Eliot Asyre
Max Schwartz
Mr. Jack Levitt

Juanita Smith
Mr. and Mrs. Bruce Gansner
Mr. and Mrs. Michael Mitchell
Mr. and Mrs. Stanley Rigdon

Janet Weber
Mr. and Mrs. Les Huster
Mr. and Mrs. Rich Zander

Margaret Zander
Mr. and Mrs. Wayne Aceto
Dr. and Mrs. J. M. Conoyer
Mr. and Mrs. Victor Eickelberg
Mr. Dan Martin
Mr. and Mrs. Jeremiah Murphy
Ms. Evelyn Steinbrueck

In Honor Of...

Dr. Ben Conoyer
Mr. and Mrs. Thomas Glosier

Jerry & Mary Beth Daniels
Mr. and Mrs. Bill Rusnack

The Galen Family
Mr. and Mrs. Kevin J. Galen

Tom and Cathy Glosier
Ms. Lael Sutherland

April Klutenkamper
Mr. and Mrs. Brian Klutenkamper

Carolyn Koenig
SSP Search Solutions

Rick and Mary Leach
Mr. and Mrs. Doug Pierce

Maria Mayo
Mr. Richard Greene

Bernadine Meinders
Ms. Linda Armstrong

Richard and Dee Miller's 40th Wedding Anniversary
Mr. David Miller

Our Clients
Hollrah and Fricke, Inc.

Karen Savan
Ms. Linda Antonacci
Mr. and Mrs. Jim Terbrock

Brook T. Smith
Ms. Robyn DuRant

Mary Strauss
Mr. and Mrs. Eliot Asyre

John Teig/Ruan Transportation
Technomic Inc.

Anita Viehmann
Mr. and Mrs. E. Dominic Fenoglio

Kathy Walker
Mr. and Mrs. Timothy Myers

Chue Wang/Best Food Service
Technomic Inc.

Jana & Ralph Woods
Mr. and Mrs. David Woods

Ron Woods/Ruan Transportation
Technomic Inc.

Product Donations and Volunteers

2007 Product Donations and Volunteer Highlights

Volunteers and product donations are instrumental to Youth In Need's success.

Volunteers contribute their talent and treasure in many ways throughout the year, working one-on-one with clients or completing building improvements at one of Youth In Need's locations.

Product donors are equally important, as they provide the agency with tangible, new goods that offset budgetary pressure within programs. The annual school supply and holiday drives are two of the largest drives Youth In Need holds.

Here are some of the highlights in 2007:

- **Number of Volunteers: 600**
- **Number of Volunteer Hours: 18,000**
- **Total Value of New Product Donations: \$228,357**
- **Adopt-A-Class School Supply Drive Total: \$9,525**
- **2007 Holiday Drive Total: \$36,907**



Above: Beginning in December 2007, Lowe's volunteers donated their time and supplies to make significant repairs to the Transitional Living Program house, the Emergency Shelter and the Kingshighway Head Start Center.



Top, right: AMDOCS volunteers spent an afternoon playing card games and preparing a Thanksgiving meal for children and teens staying at the Emergency Shelter.



Right: In November 2007, Target volunteers spread holiday cheer throughout the Monsanto Fund Science Discovery Garden at Youth In Need by spending the morning decorating with ExCEL students. Local Target stores donated all of the holiday decorations and materials.



*Believing in the power of potential,
Youth In Need's mission
 is to provide nurturing environments
 and educational opportunities so
 children, youth and families will find
 safety and hope, achieve their goals,
 and build a positive future.*



2007 Annual Report

ADDRESS SERVICE REQUESTED

NON-PROFIT
 U.S. POSTAGE
PAID
 ST. LOUIS, MO
 PERMIT NO. 3619

www.youthinneed.org

636-946-5600
 St. Charles, MO 63301
 1815 Boone's Lick Road
 Youth In Need Center

